

Premier Multi-Platform Video Configuration Software

NEW FOR 2026 - NOW WITH PRESET CAPABILITY

> Product Description



Netvio360 is the dedicated configuration software for all Netvio video distribution systems, supplied free of charge with every compatible product. Designed for both AVoIP platforms and traditional HDMI/HDBaseT matrix systems, it provides installers with a single, unified environment for setup and management.

By combining automatic DHCP networking, real-time device discovery, and intuitive configuration tools, Netvio360 dramatically reduces installation time and ensures systems are ready to perform within minutes.

The software offers a clear visual interface that simplifies the routing of signals and the application of EDID settings, while also providing full tools for configuring complex video wall layouts up to 16x16.

Built-in firmware management keeps every encoder, decoder, and matrix device up to date, further streamlining maintenance and system reliability.

With cross-platform support for both Windows and macOS, Netvio360 adapts to the workflow of every integrator. Whether deployed on a compact matrix switcher or a large-scale AVoIP installation, Netvio360 is the central hub that ensures each system is easy to configure, stable to operate, and fully optimized from day one.

> Product Features

- Automates AVoIP device discovery via DHCP (no manual network settings)
- Enables simultaneous configuration of multiple devices (batch setup)
- Visual routing of signals: video, audio, control (IR, RS-232, USB)
- Flexible signal filtering (e.g. show/hide by signal type)
- Video encoding / decoding support: HDCP v1.4 / v2.2, scaler settings (2160, 1080, 720)
- Real-Time Streaming Protocol (RTSP) support for external decoding/streaming
- EDID management (read, import/export, presets)
- Control & command routing (CEC, IR, serial hex / ASCII) for display power, volume, etc
- Security & API support: HTTPS / TLS, certificate upload, password / auth settings, SSL support [Netvio](#)
- Video wall configuration: layout (up to 16x16), bezel correction, portrait/landscape modes.
- Firmware updates (controller & endpoints) via software interface.
- Real-time system status and feedback: online/offline status, bandwidth, video resolution, IP/MAC info.
- Compatibility with Netvio's IP series switches (one-click config)

> Specifications

Initial Device Discovery

- Downloadable Netvio360 software
- Alternative browser version
- Initial JP4 control & Matrix discovery via DHCP
- Audio discovery
- Configuration, Set-up, Management password protected.

Device Configuration

- Auto scan & assign of AVoIP devices.
- Matrix auto populates according to fixed input & outputs.
- Device identification via mac address or familiar name.
- Same screen identification of inputs and outputs with visual routing of video, audio, control & USB.
- Ability to filter routing presentations according to signal type: Video, IR, Audio, Serial, USB
- Individual or Batch select devices for configuration.+

Video Settings

Encoder

- HDCP v1.4, V2.2 or automatic
- Encoder quality bias based on source type
- Enhanced compatibility mode

Decoder

- HDCP Mode: Pass-Through | HDCP v2.2 | HDCP v1.x
- Extended Compatibility Mode (Non-HDCP Content).
- Scaler Settings: 2160 | 1080 | 720
- Proxy Power Off Timeout (Seconds)
- Proxy Power On
- Idle Screen Status Information
- Idle Screen alternative image upload

Network Device Identification (OSD)

- Start Identification
- Delayed Identification
- Stop Identification

Real-Time-Stream-Protocol (RTSP)

- Enable RTSP (Real-Time-Scream-Protocol)
- RTSP URL for 3rd party software & decoding
 - Used for embedded, wireless, streaming software.
- Choice of preview stream codec | H.264 | H2.54
- Preview stream resolution options | 1080, 720, 540
- Encoding rate adjustment | Constant | Variable
- Preview stream target bitrate

Audio

- Software EDID configuration on all devices.
- Read EDID from display
- Capture EDID
- Input | Export EDID
- 24 Preset EDID settings
- 10 User Defined EDID Pre-Set

Encoder

- HDMI Input Select: HDMI | Analog (Encoder input)
- Analog output volume control

Decoder

- Anlogue Audio Output Volume

Control

IR

- IR Test Generator

RS-232

- Baud Rate | Byte Length | Parity Bit | Stop Bits
- Serial Test Generator (Hex/ASCII)

CEC

- CEC Test Generator

Proxy Commands

- CEC | IR | Serial Hex | Serial ASCII
- Power On / Off | Vol Up / Down / Mute
- Manufacturer Pre-Sets | HiSense, LG, Panasonic, Phillips, Roku, Samsung, Sony, TCL

Real-Time-System-Feedback

- Online/Offline devices
- Mac Address
- IP Address
- FW Version
- Video Resolution
- Output mode | Scaler
- Scaler Settings
- HDCP Mode
- Content Bias
- EDID
- Preview URL |
 - rtsp://192.168.8.193/live/main/av_stream
- Basic API | in1-videotx1 | out1-videorx1

EDID

Software EDID configuration on all devices.

- Read EDID from display
- Capture EDID
- Input | Export EDID
- 24 Preset EDID settings
- 10 User Defined EDID Pre-Set

Video Wall Settings

- Display Panel Config | W / H / Bezels
- Layout Selection upto 16x16
- Lanscape | Portrait Selection
- Defining Video Wall Presets

Controller Management

- Add friendly name for controller
- Controller addressing Mode | DHCP, AutoIP, Static
- Controller Network Settings: Host IP, Subnet Mask, Default Gateway IP.
- Software Controller Reboot | Network / Factory Reset.
- Current firmware
- Firmware Update

Endpoint Management

- Reboot from Software
- Reboot with Default Network Settings
- Reboot with Factory Default Settings
- Unassign Device
- Remove Endpoint

Security & API Settings

- Change password
- HTTPS Mode | On / Off
- Plaintext API Mode | On / Off
- SSL/TLS Certificates
- Upload X.509 certificate
- Upload RSA key

Netvio IP-SW Series Compatibility

- One'click' configuration of Netvio IP Series Network switches.

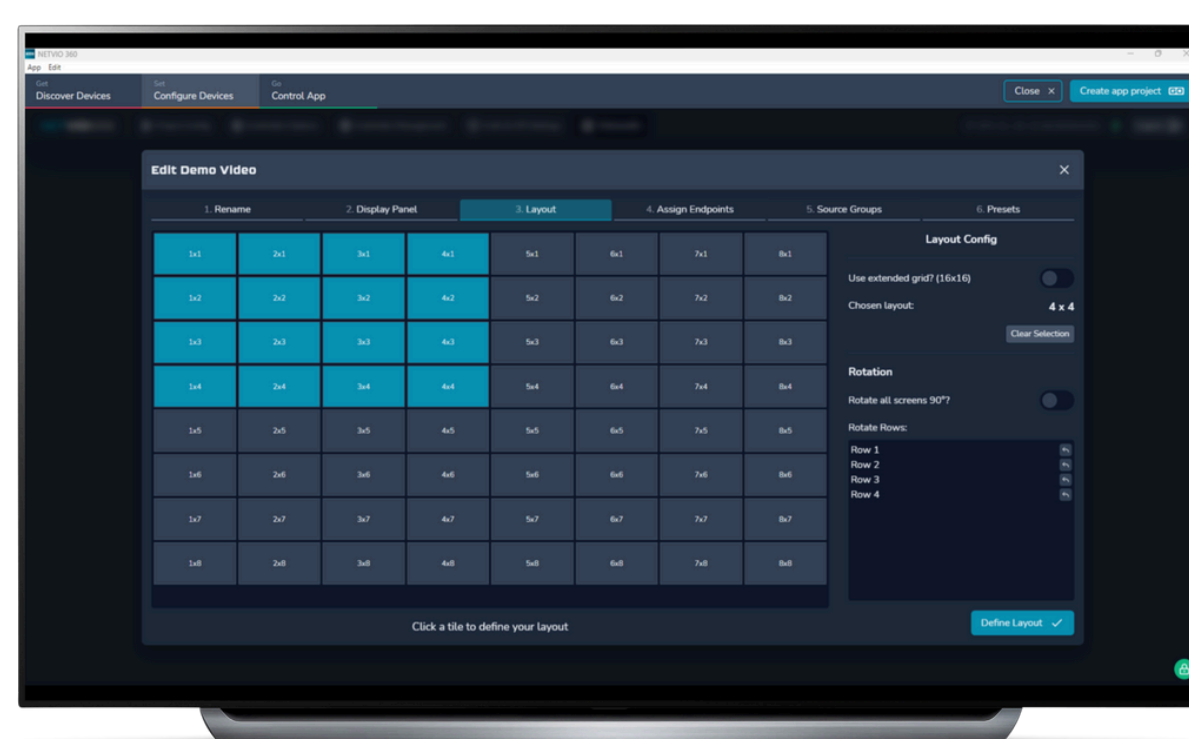
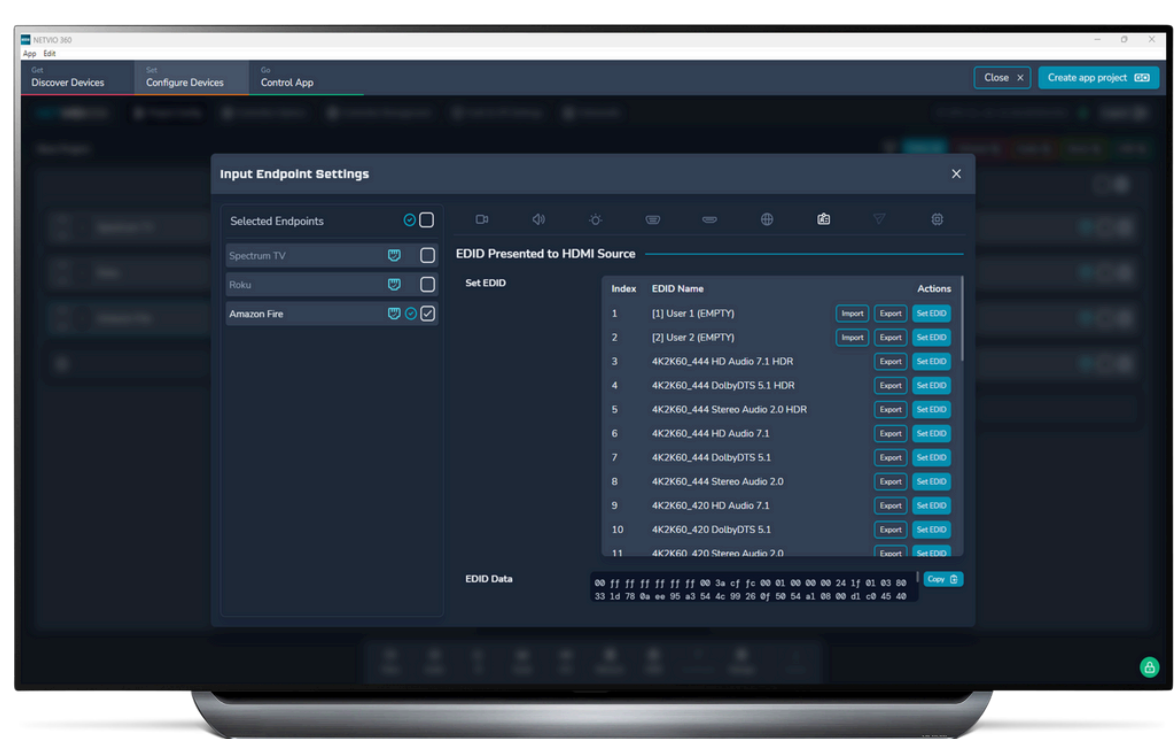
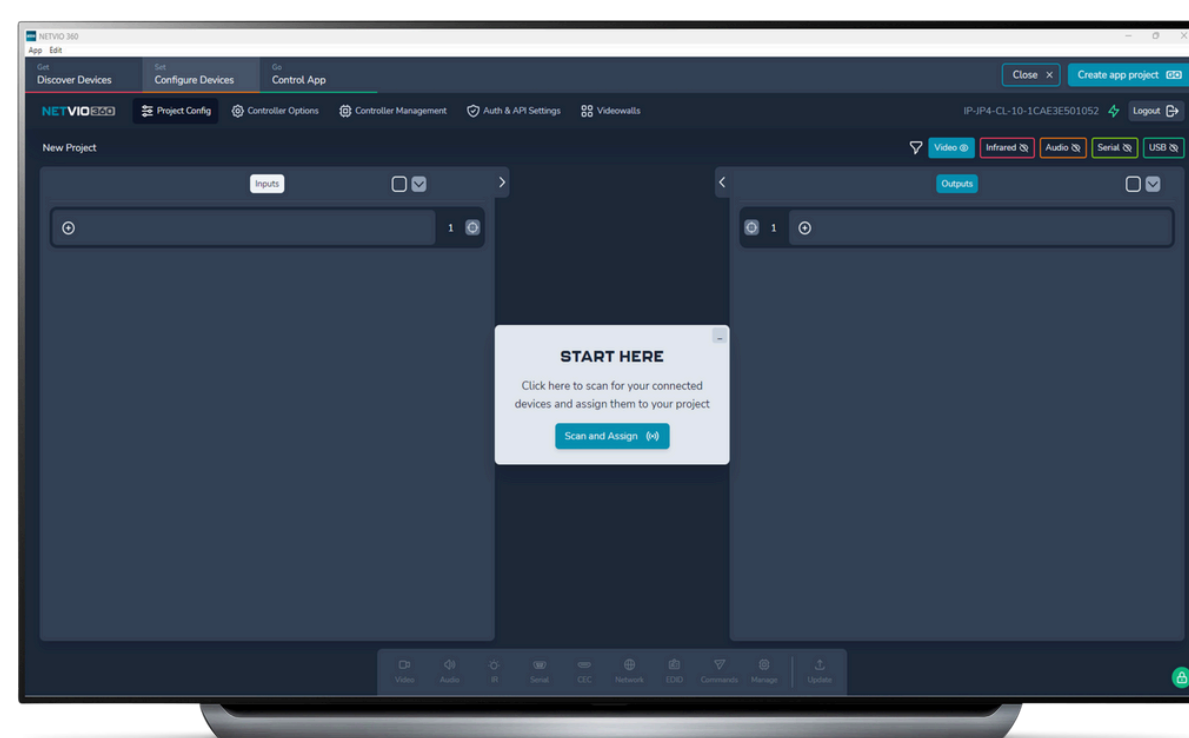
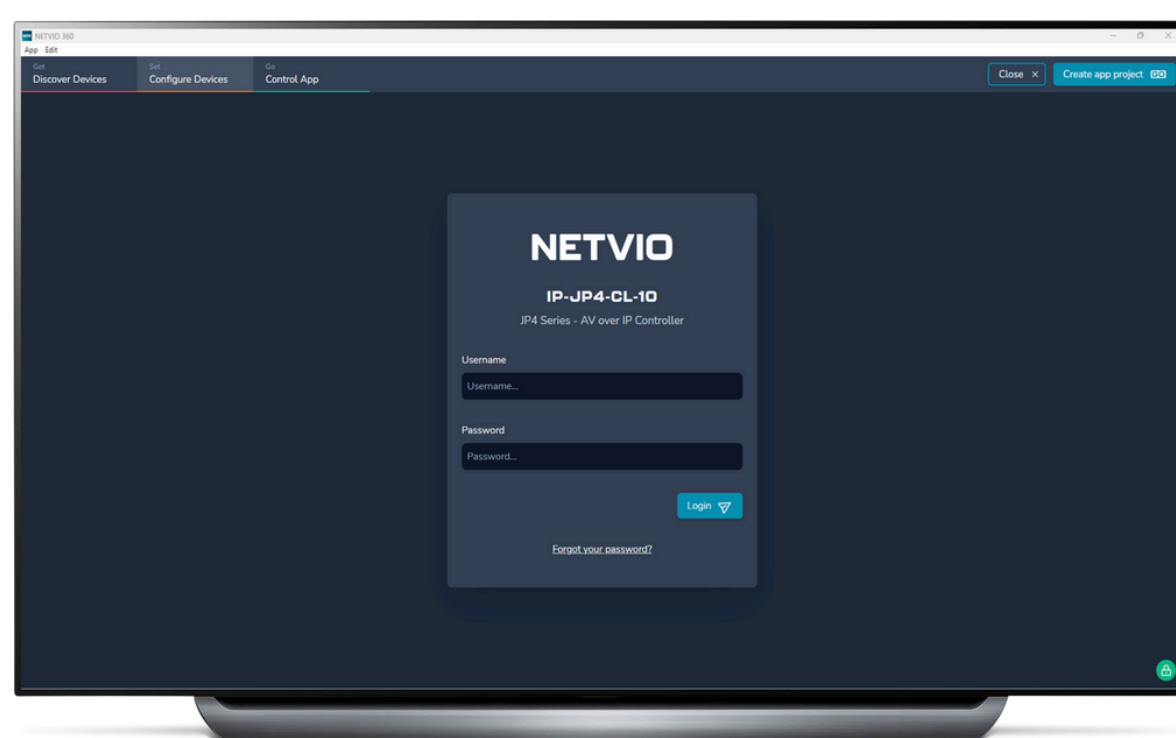
Netvio Next Step Software

- Gateway to Netvio's Free App Builder Software
- Recall saved Netvio App configuration files

> System Requirements

- PC / Windows: Windows 7 (64-bit) or later, 4 GB RAM.
- Mac / macOS: macOS 10.11 or later, 4 GB RAM or more
- PC or Mac with 8 GB RAM, modern CPU (4-core PC or M series Mac), SSD drive, good network connection.
- Also ensure your display is good resolution so you can view all UI panels / App Builder clearly.

> Other Screen Layout Examples



> M&E Description

Architects & Engineers Specification – Netvio360 Data Sheet (09252025)

The configuration software shall be Netvio360 or approved equal. The software shall provide a unified platform for the setup, configuration, and management of all Netvio video distribution systems, including both AVoIP devices (encoders, decoders, and IP switches) and traditional HDMI/HDBaseT matrix systems. It shall operate as a license-inclusive application supplied at no additional cost with all compatible hardware.

The software shall support automatic DHCP networking to eliminate manual IP configuration and provide real-time device discovery to identify and register all connected hardware within seconds. It shall allow the simultaneous configuration of multiple devices to accelerate deployment and reduce installation time.

The user interface shall present a clear visual environment for signal routing, including video, audio, and control (IR, RS-232, USB where applicable). The software shall include full EDID management capabilities, including the ability to read, store, import, export, and apply presets for maximum compatibility across displays and sources. It shall also provide integrated video wall configuration tools supporting layouts up to 16x16, bezel correction, and portrait/landscape orientation.

The system shall include firmware update management, allowing controllers and endpoints to be updated directly through the software. Updates shall be applicable across multiple devices simultaneously to ensure consistent performance throughout the system.

Netvio360 shall be supported on both Windows (Windows 7 64-bit or later) and macOS (10.11 or later) operating systems, with a minimum of 4 GB RAM and a recommendation of 8 GB RAM or greater, modern 4-core CPU (PC) or M-series processor (Mac), SSD storage, and a stable network connection. A high-resolution display shall be required to ensure all UI panels are clearly visible.

The software shall serve as the central hub for configuration and maintenance, ensuring that both small-scale and enterprise-level Netvio installations can be deployed quickly, managed efficiently, and maintained reliably over time.